

**MIL-C-38999
Series II**

MS27510 B 18 C L

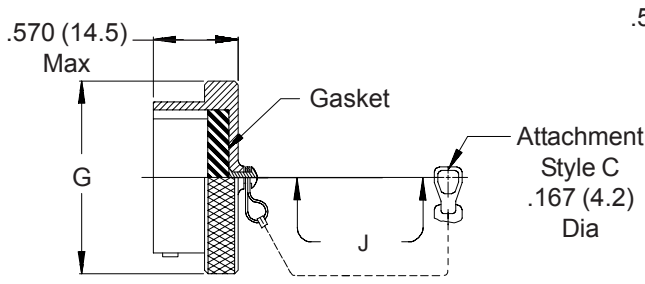
Basic Part No. _____
 MS27510 = Plug Cover
 MS27511 = Receptacle Cover

Finish _____
 A = Gold Iridite Over Cadmium Over Nickel
 B = 500 Hour Cadmium Olive Drab
 C = Anodize
 F = Electroless Nickel

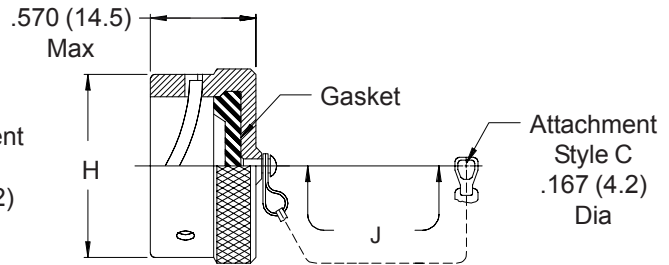
Shell Size _____

Length (Omit for Standard)
 L = 5.0 (127.0)
 M = 6.0 (152.4) MS27510 Only
 N = 7.0 (177.8) MS27510 Only

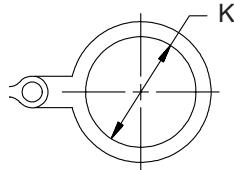
Attachment Style
 A = No Attachment
 C = Chain
 N = Chain with Ring (MS27511 Only)
 R = Rope (MS27511 Only)



MS27510 Plug Cover



MS27511 Receptacle Cover



MS27511 Attachment Type N

TABLE I

Shell Size	G Dia Max	H Dia Max	J Nom Length	K Dia Min
8	.720 (18.3)	.630 (16.0)	3.00 (76.2)	.890 (22.6)
10	.850 (21.6)	.761 (19.3)	3.00 (76.2)	1.010 (25.7)
12	1.000 (25.4)	.936 (23.8)	3.00 (76.2)	1.140 (29.0)
14	1.130 (28.7)	1.074 (27.3)	3.50 (88.9)	1.260 (32.0)
16	1.250 (31.8)	1.172 (29.8)	3.50 (88.9)	1.390 (35.3)
18	1.380 (35.1)	1.304 (33.1)	3.50 (88.9)	1.510 (38.4)
20	1.500 (38.1)	1.435 (36.4)	4.00 (101.6)	1.640 (41.7)
22	1.630 (41.4)	1.560 (39.6)	4.00 (101.6)	1.760 (44.7)
24	1.750 (44.5)	1.688 (42.9)	4.00 (101.6)	1.890 (48.0)

1. For complete dimensions see applicable Military Specification.
2. Metric dimensions (mm) are indicated in parentheses.